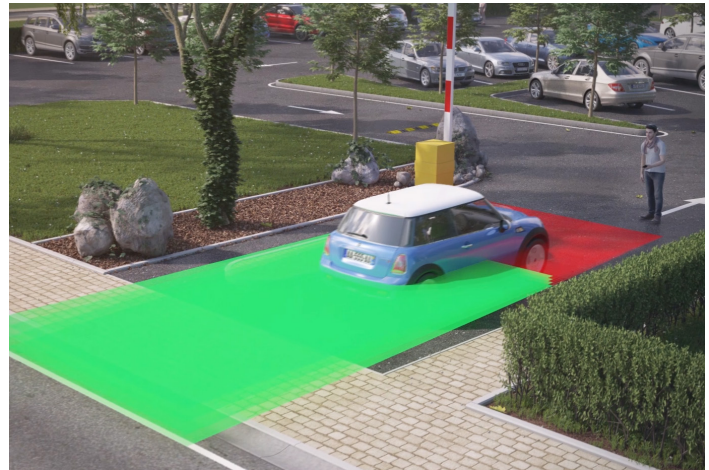


# LZR<sup>®</sup>-H110

## LASER SCANNER FOR GATE & BARRIER APPLICATIONS



### PRIMARY APPLICATIONS



### DESCRIPTION

BEA's LZR-H110 is a laser-based time-of-flight sensor designed for gate and barrier applications.

This solution provides four laser-based curtains, offering a three dimensional detection zone for accurate object detection. Its detection curtains are highly-configurable and can be set up for opening, securing and presence detection in vehicle sensing applications.

The LZR-H110 is an alternative to induction loops in locations where cutting into the ground is inconvenient or restricted. The sensor is housed in a NEMA 4 rated enclosure, further ensuring its performance in outdoor environments.

### FEATURES & BENEFITS

- Two relays allow for activation via motion or presence
- Suitable for applications where cutting ground for loops is prohibited or impossible
- True presence-based detection which ensures accurate and immediate activation
- Ability to detect vehicle trajectory during approach and depart
- Maximum detection field of 252 in x 198 in (21 ft x 16.5 ft)
- Teach-in setup via walk path or remote control configuration

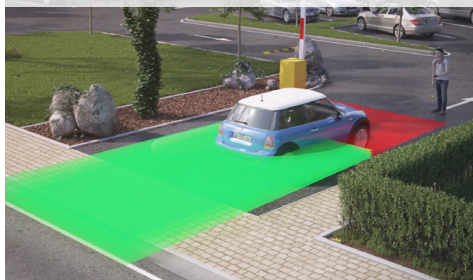


BEA, Inc.  
RIDC Park West  
100 Enterprise Drive  
Pittsburgh, PA 15275-1213

Customer Service: 800.523.2462  
Technical Support: 800.407.4545  
www.BEAinc.com

## APPLICATIONS

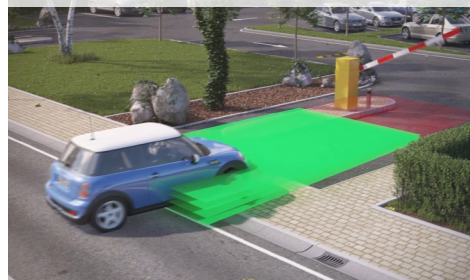
### GATE & BARRIER PRESENCE DETECTION



### PEDESTRIAN PRESENCE DETECTION



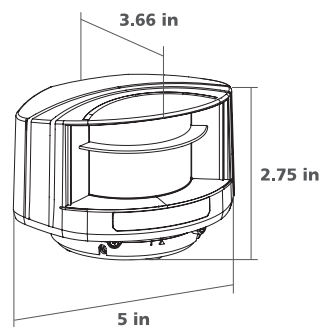
### GATE & BARRIER ACTIVATION



## TECHNICAL SPECIFICATIONS

<b>Technology</b>	LASER scanner, Time-of-Flight measurement
<b>Detection Mode</b>	Motion & Presence
<b>Max. Detection Range</b>	5 m × 6.5 m (16.5 ft × 21 ft)
<b>Remission Factor</b>	> 2%
<b>Angular Resolution</b>	0.3516°
<b>Emission Characteristics</b>	
IR LASER	Wavelength 905 nm; max. output pulse power 75 W (CLASS 1)
Red Visible LASER	Wavelength 650 nm; max. output CW power 3 mW (CLASS 3R)
<b>Supply Voltage</b>	10 – 35 VDC @ Sensor Terminal
<b>Peak Current at Power-On</b>	1.8 A (Max. 80 ms @ 35 V)
<b>Power Consumption</b>	< 5 W
<b>Response Time</b>	Min 20 ms; Max 80 ms
<b>Output</b>	2 electronic relays (galvanic isolated – polarity free)
Max. Switching Voltage	35 VDC / 24 VAC
Max. Switching Current	80 mA (resistive)
<b>LED-Signal</b>	1 Blue LED: Status « Power-on » 1 Orange LED: Status « Error » 2 Red/Green LEDs: Status « Detection/Output »
<b>Dimensions</b>	
Housing	3.66 (W) × 2.75 in (H) × 5 in (D)
10LBA Mounting Bracket	0.55 in
<b>Cable Length</b>	10 m (30 ft)
<b>Material</b>	PC / ASA
<b>Color</b>	Black
<b>Rotation Angle on Bracket</b>	±5° (Lockable)
<b>Tilt Angle on Bracket</b>	±3°
<b>Degree of Protection</b>	NEMA 4 / IP65
<b>Temperature Range</b>	-30 °C – 60 °C if powered; -10 °C – 60 °C unpowered
<b>Humidity</b>	0 – 95% non-condensing
<b>Vibrations</b>	< 2 G
<b>Pollution on Front Screens</b>	Max. 30% ; Homogenous
<b>Test Body Dimensions</b>	< 11.81 in × 7.87 in × 27.56 in @ 276 in (EN 12445 test body A)
<b>Norm Conformance</b>	2006 / 95 / EC: LVD; 2002 / 95 / EC: RoHS; 2004 / 108 / EC: EMC; EN 60529:2001; IEC 60825-1:2007; EN 60950-1:2005; EN 61000-6-2:2005; EN 61000-6-3:2006

## DIMENSIONAL DRAWINGS



## RELATED PRODUCTS

 <p><b>10LZRH110</b> LZR-H110 SENSOR</p>	 <p><b>10BR3</b> BR3 LOGIC MODULE</p>	 <p><b>10PS12-24</b> 110-1224 VDC POWER SUPPLY</p>
 <p><b>10LBA</b> LZR MOUNTING BRACKET ACCESSORY</p>	 <p><b>10MINIBRACKET</b> 6 IN – 12 IN EXTENSION BRACKET</p>	 <p><b>10REMOTE</b> BEA UNIVERSAL REMOTE CONTROL *REMOTE IS REQUIRED</p>
 <p><b>10LIGHT-XX</b> LED SIGNAL MODULAR LIGHT SERIES</p>		

www.BEAinc.com

© 2017 BEA, Inc. All rights reserved.

LZR®-H110

LASER SCANNER FOR GATE & BARRIER APPLICATIONS

79.0390.05 20180524

BEA, Inc.  
RIDC Park West  
100 Enterprise Drive  
Pittsburgh, PA 15275-1213

Customer Service: 800.523.2462  
Technical Support: 800.407.4545

